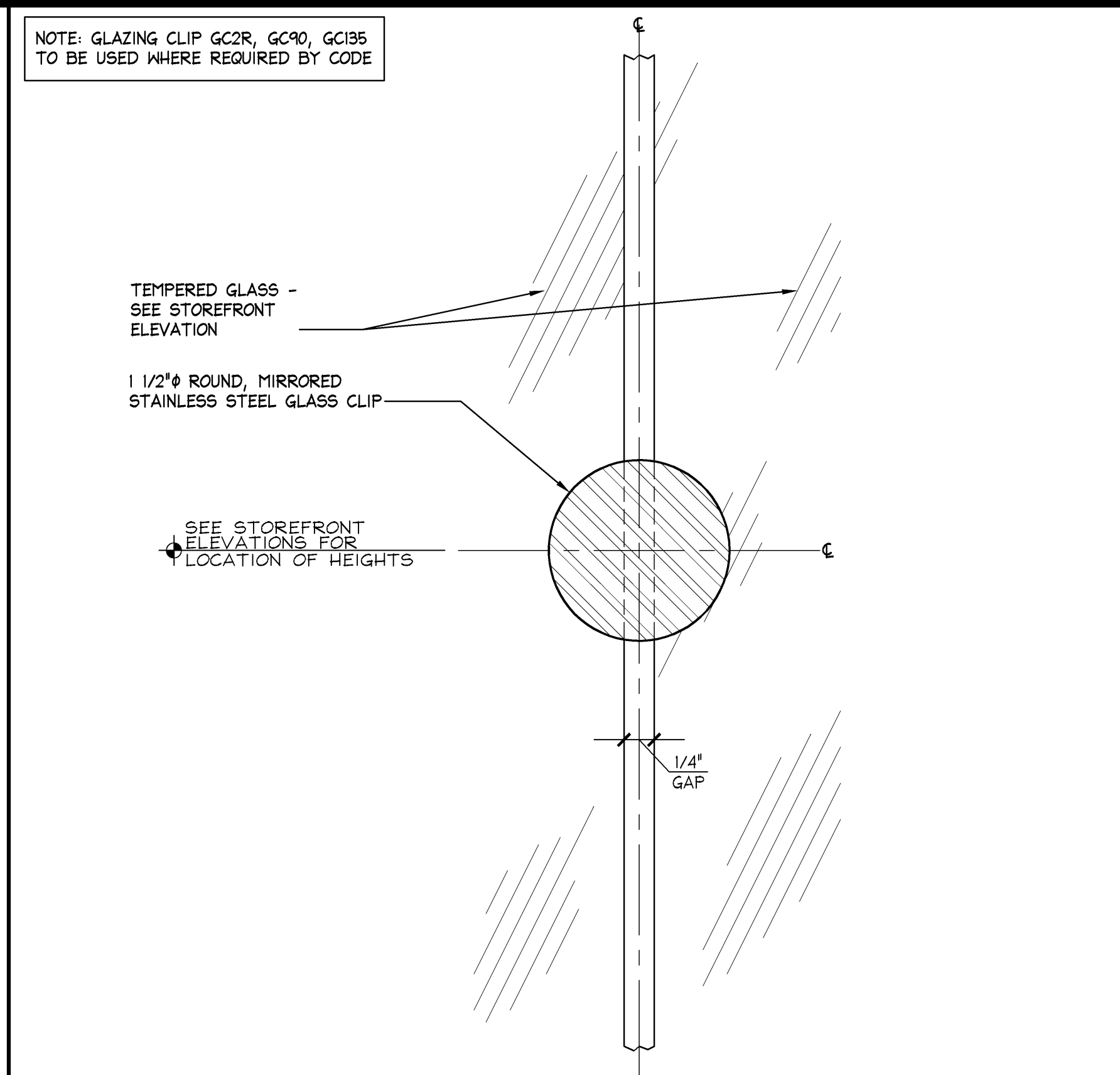


TRANSOM HEAD DETAIL

6" = 1'-0"

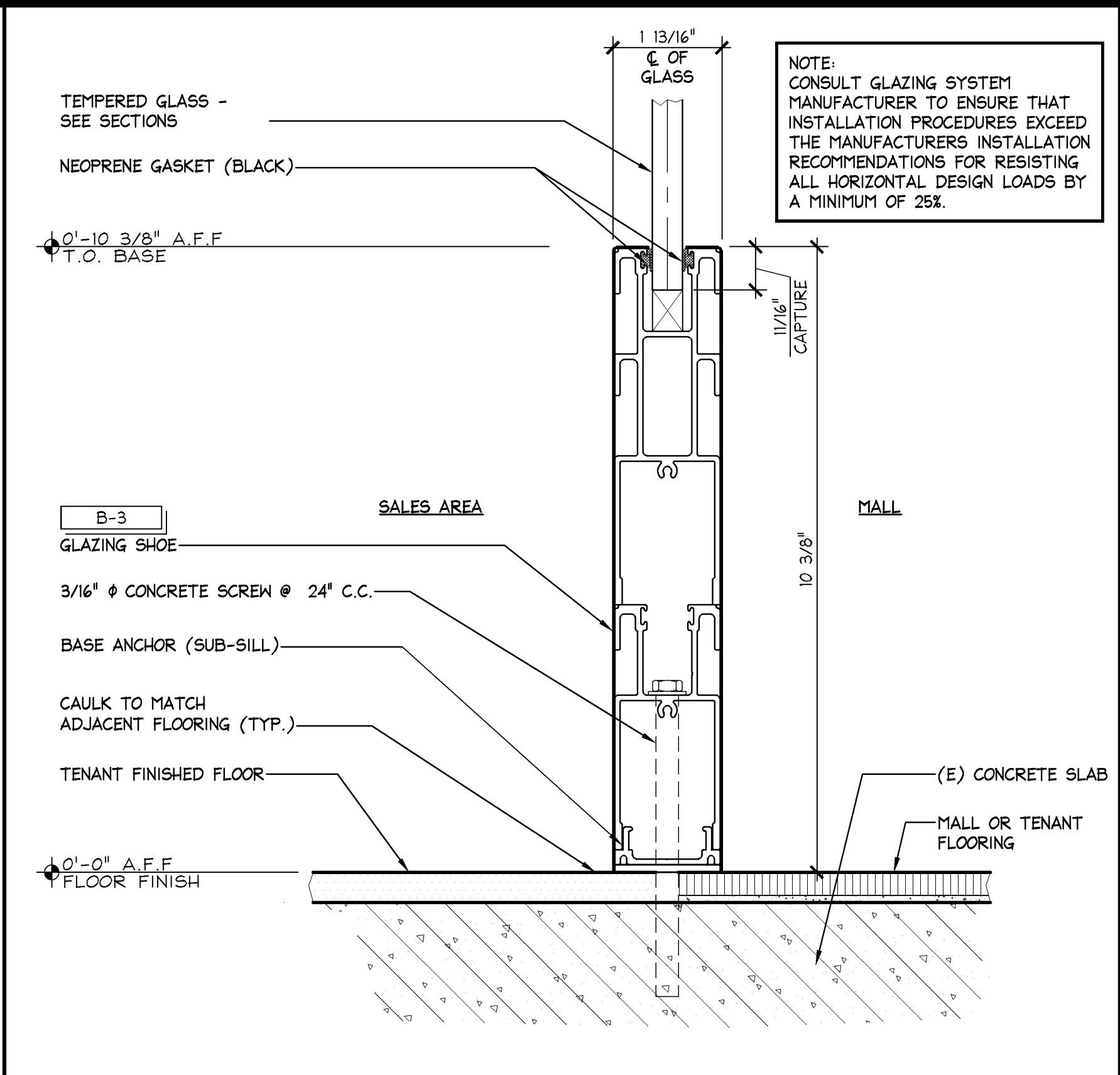
M



GLASS CLIP DETAIL

FULL

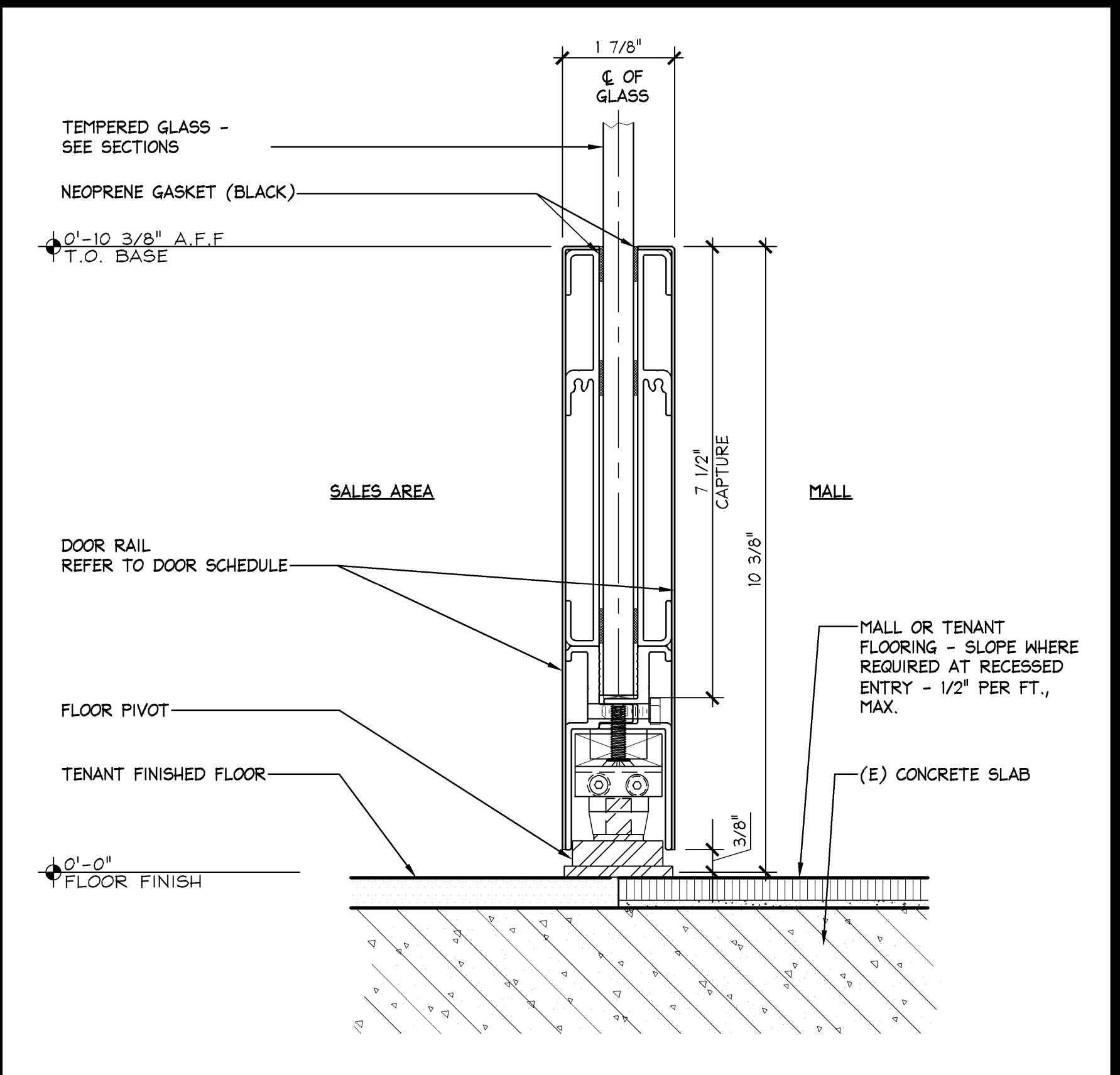
J



SIDELIGHT BASE DETAIL

6" = 1'-0"

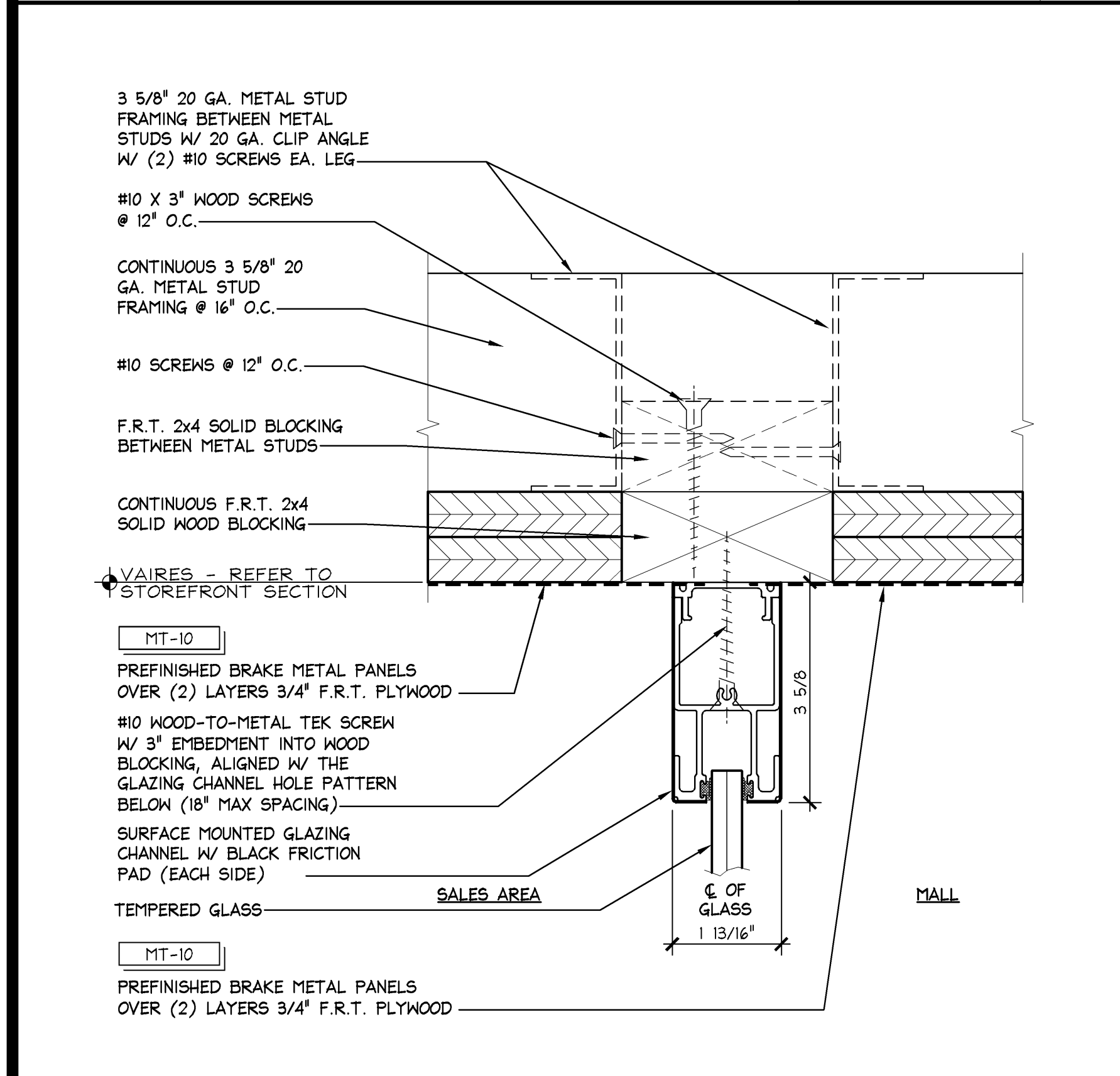
F



DOOR BASE @ STOREFRONT DETAIL

6" = 1'-0"

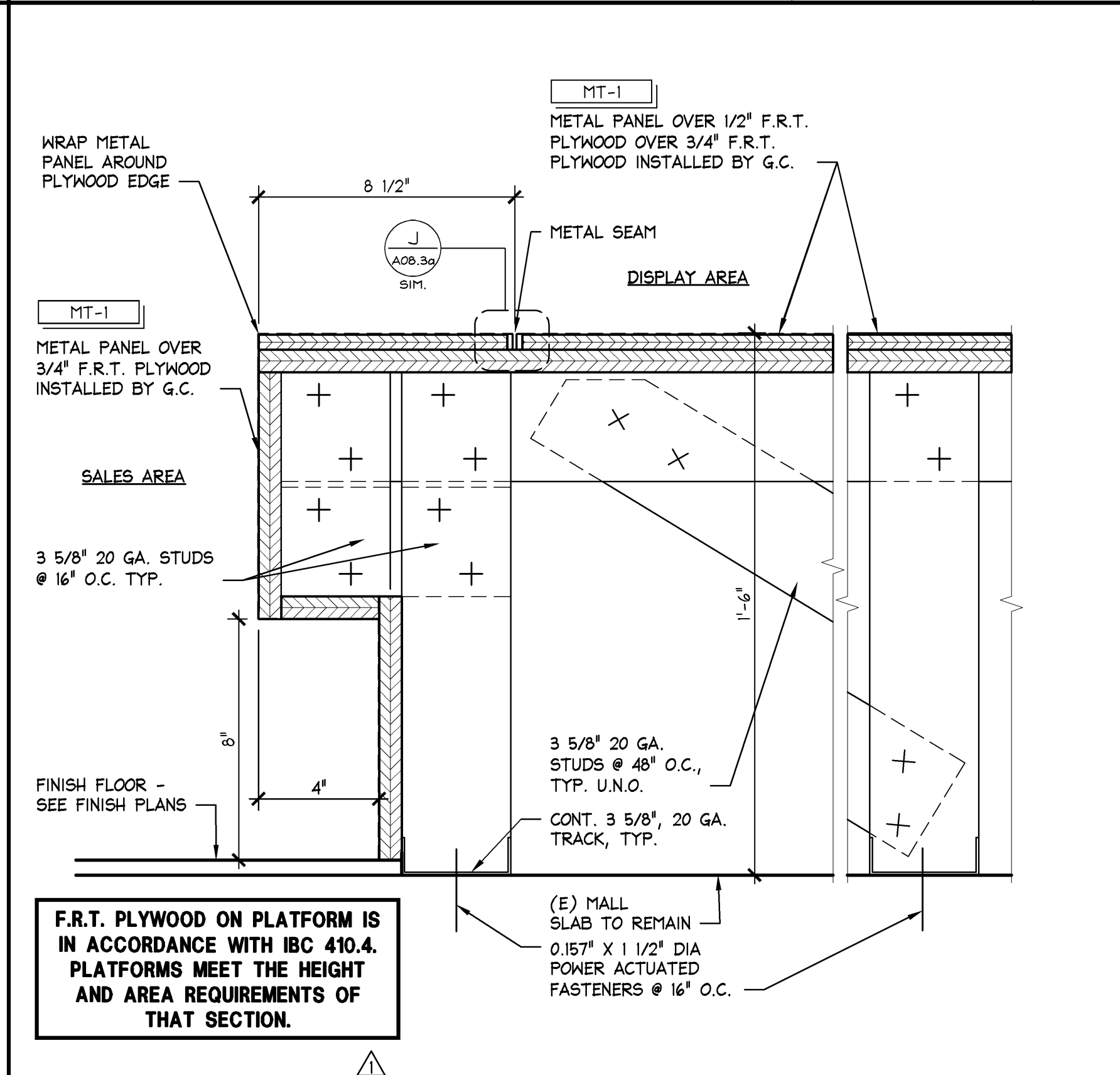
C



SIDELIGHT HEAD DETAIL

6" = 1'-0"

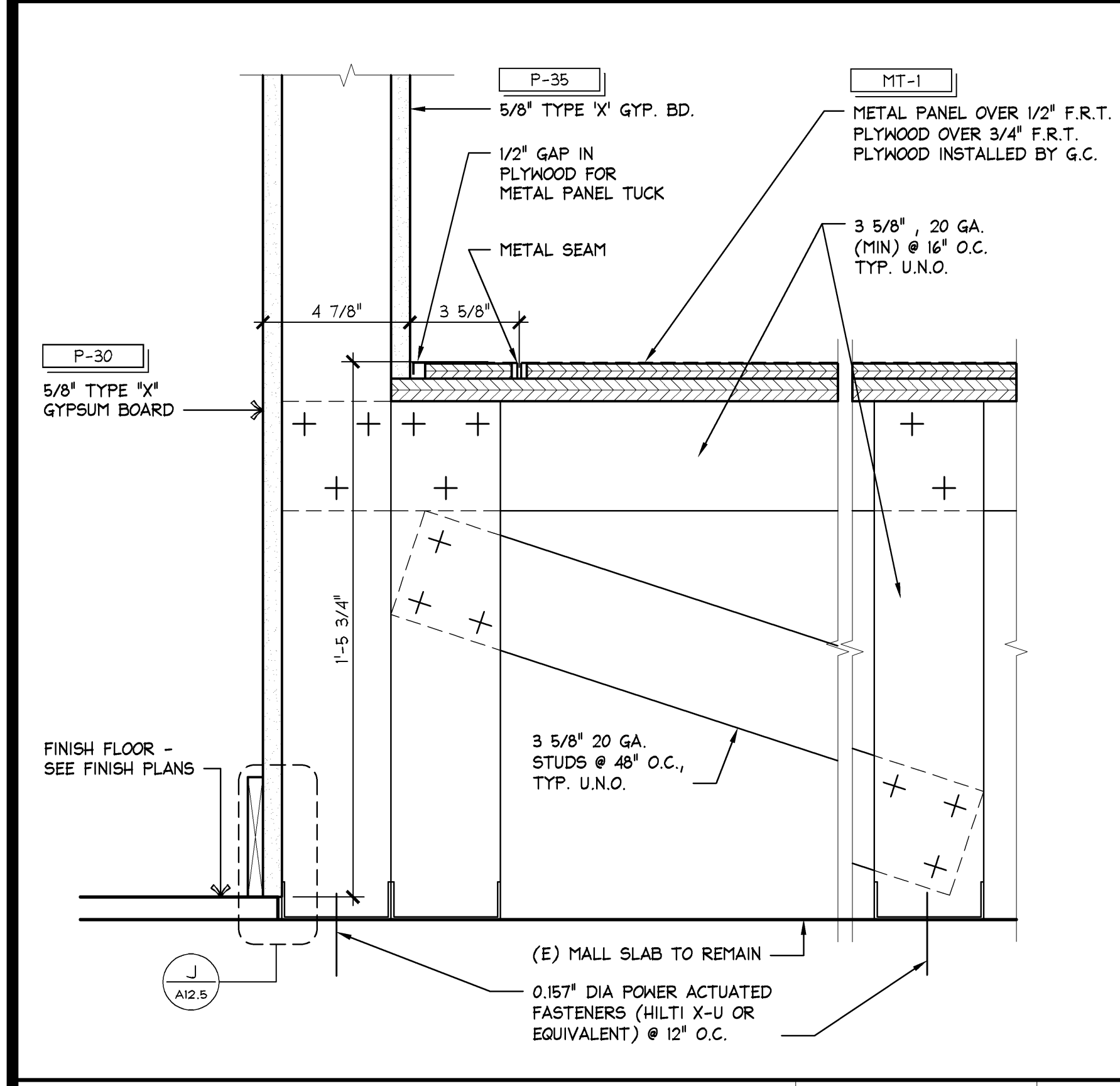
L



PLATFORM DETAIL @ INTERIOR SIDE

3" = 1'-0"

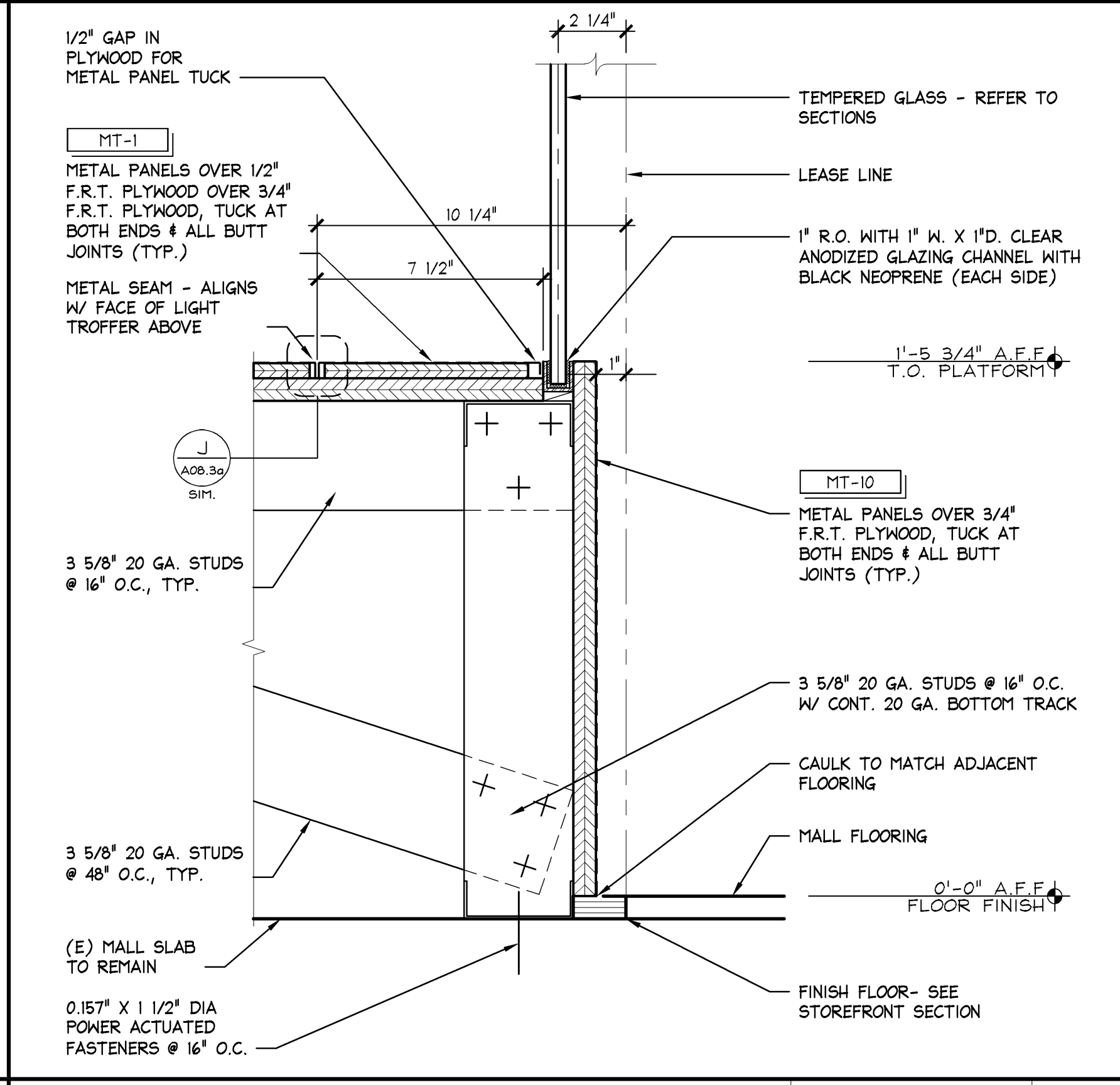
H



PLATFORM DETAIL

3" = 1'-0"

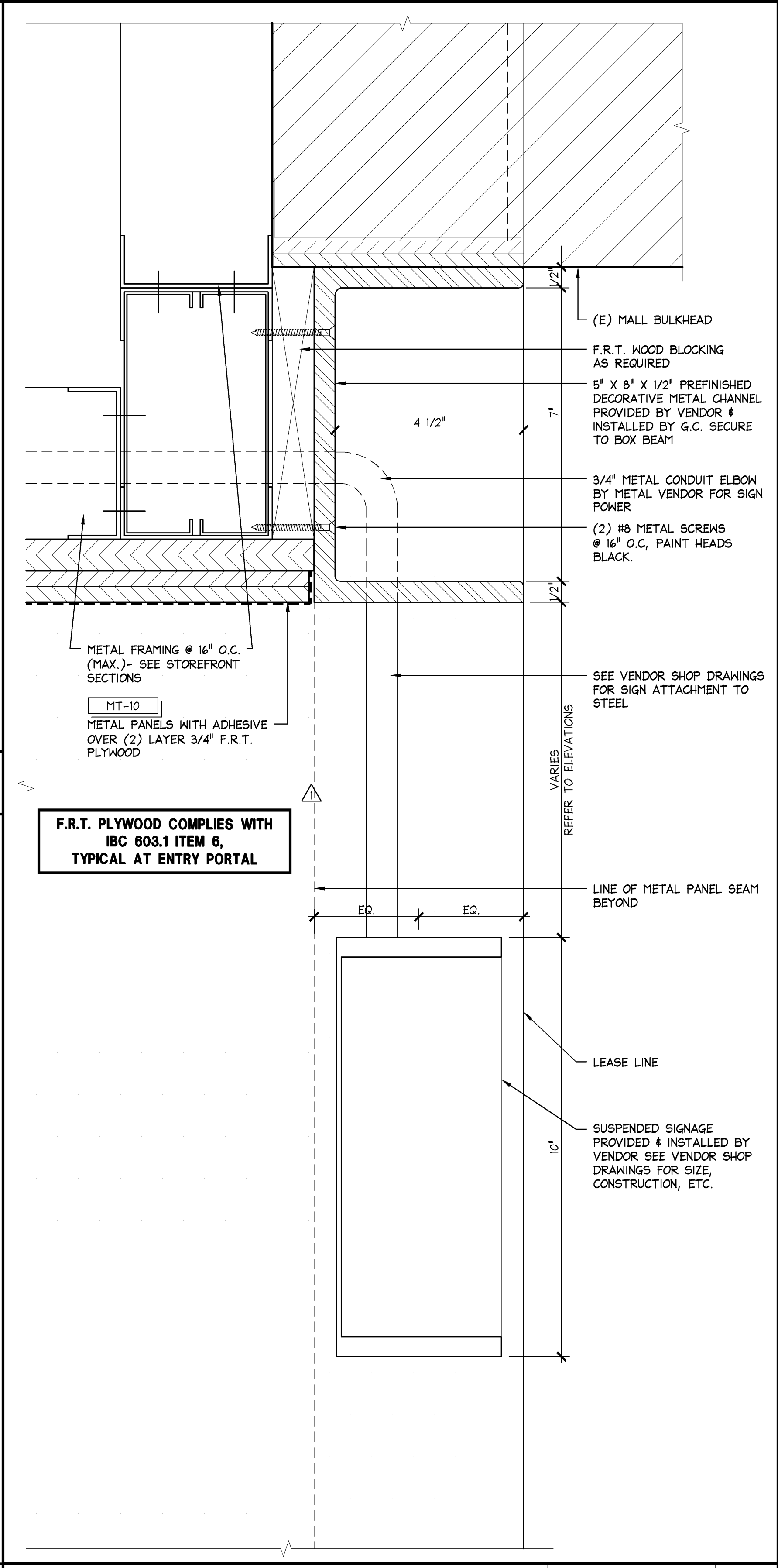
K



PLATFORM DETAIL @ EXTERIOR SIDE

3" = 1'-0"

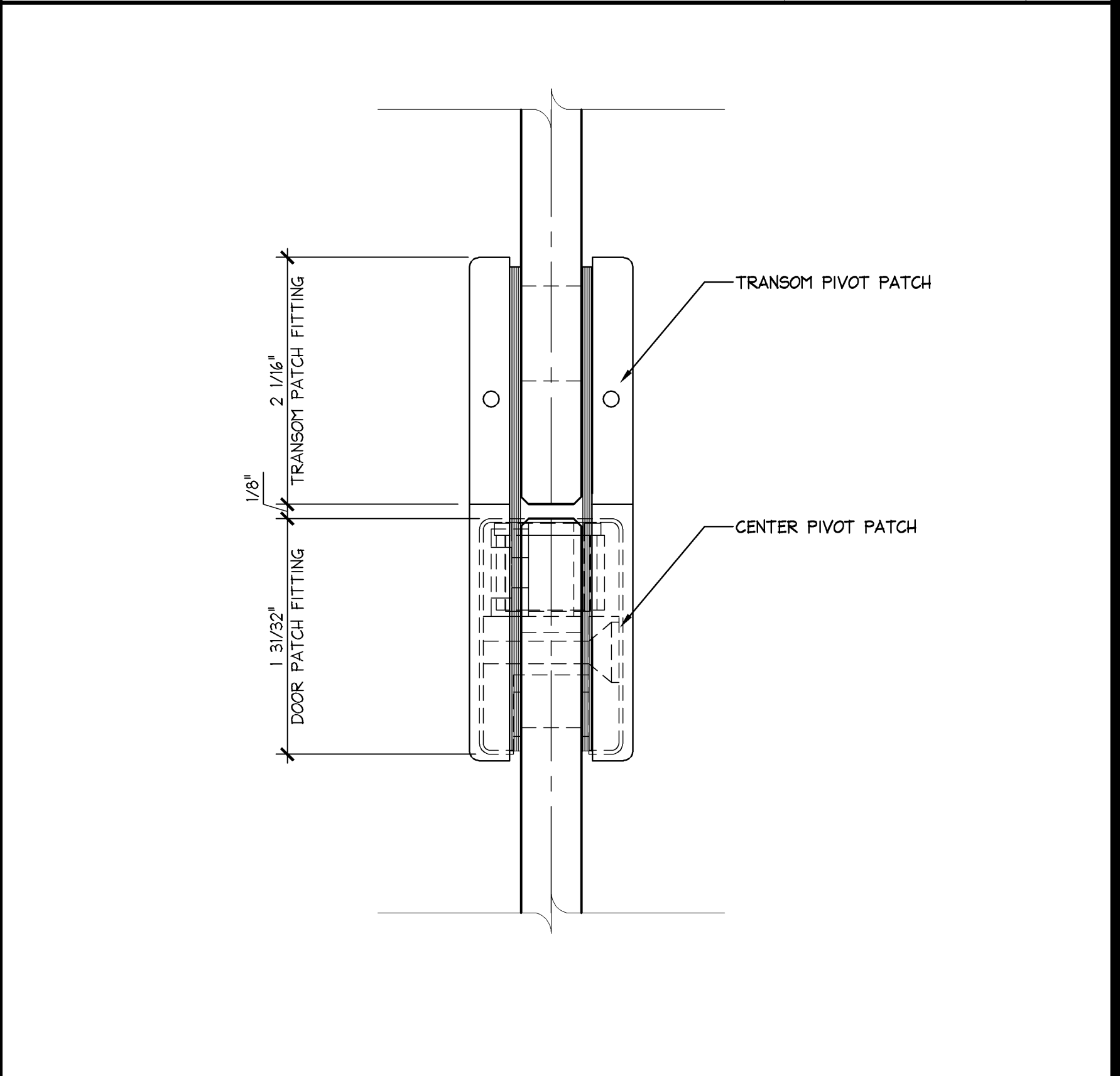
G



STOREFRONT SIGN DETAIL

6" = 1'-0"

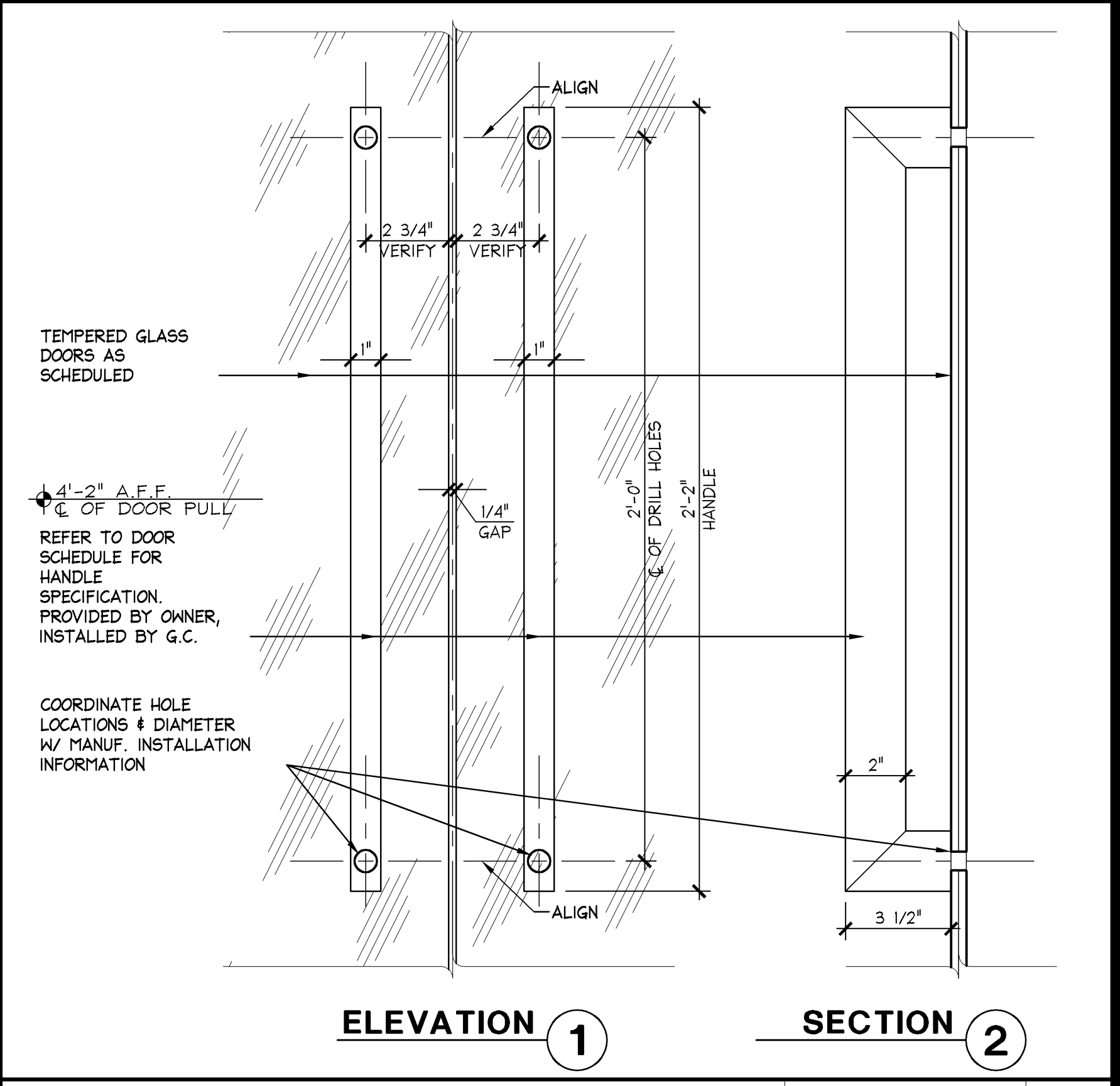
D



DOOR HEAD / TRANSOM DETAIL

FULL

B



DOOR HANDLE DETAIL

3" = 1'-0"

A

EXPRES

EXPRESS FASHION OPERATIONS, LLC
d/b/a STORE DESIGN & CONSTRUCTION
1 Express Drive Columbus, Ohio 43230
Telephone: 614.474.4001 Express.com

712

PROJECT INFORMATION:

EXPRESS
SPRINGFIELD TOWN CENTER
584 CE O.C. 6847
SPRINGFIELD, VA 22150

NEW PACKAGE: 94569 J/A/E PROJECT #:
GENERATION: DG
ESD&C PROJECT #:

REVISIONS:

NO.	DESCRIPTION	DATE
1	REVISION	03/13/14
2	REVISION	04/09/14
3	REVISION	05/09/14

SHREMSHOCK
Shremshock Architects, Inc.
6100 S. Salsbery Rd. Westerville, OH 43081
T: 614.545.4550 F: 614.545.4551 shremshock.com
Gerald S. Shremshock, Architect
Timothy J. Shremshock, Architect

ELITE CONSTRUCTION GROUP
LAKE JACKSON, TX
PHONE: 979-285-0712
NOTE: THESE PRINTS HAVE BEEN REDUCED BY 50 PERCENT SCALE WILL BE 50 PERCENT OF WHAT IS NOTED ON PLANS

DATE ISSUED: 02/14/2014
DESIGNED BY: JUB
DRAWN BY: ACB
CHECKED BY: KMM

STOREFRONT DETAILS

DRAWING NUMBER:
A08.4